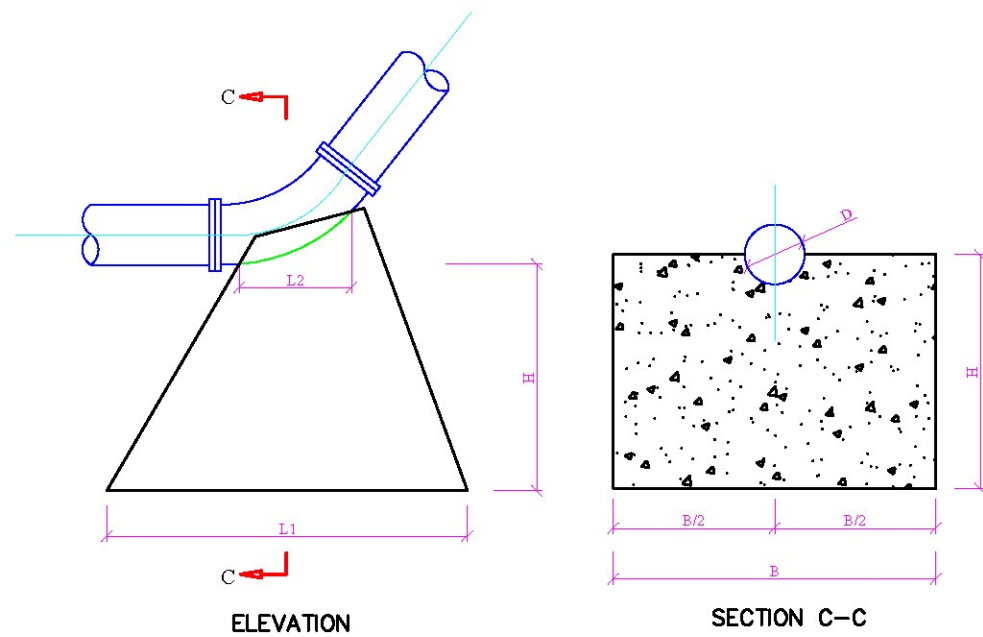


HORIZONTAL ANCHOR BLOCKS AT BENDS (TYPE HB)



VERTICAL ANCHOR BLOCK AT DEPRESSIONS (TYPE DV)

HORIZONTAL BENDS (TYPE HB)																	
NORMINAL DIAMETER	TEST PRESSURE	90° BEND				45° BEND				22 ½ BEND				11 ½ BEND			
		L1 m	L2 m	B m	H m	L1 m	L2 m	B m	H m	L1 m	L2 m	B m	H m	L1 m	L2 m	B m	H m
40-80	250	1.00	0.24	0.35	0.50	0.60	0.24	0.30	0.40	0.50	0.24	0.20	0.20	0.40	0.24	0.20	0.20
	225	0.60	0.24	0.30	0.40	0.50	0.24	0.25	0.30	0.40	0.24	0.20	0.20	0.30	0.24	0.20	0.20
	180	0.60	0.24	0.25	0.30	0.50	0.24	0.23	0.25	0.40	0.24	0.20	0.20	0.30	0.24	0.20	0.20
	135	0.80	0.24	0.25	0.30	0.50	0.24	0.20	0.20	0.40	0.24	0.20	0.20	0.30	0.24	0.20	0.20
	90	0.60	0.24	0.20	0.20	0.50	0.24	0.20	0.20	0.40	0.24	0.20	0.20	0.30	0.24	0.20	0.20
80-100	250	1.00	0.30	0.35	0.50	0.80	0.30	0.80	0.80	0.80	0.30	0.60	0.60	0.60	0.30	0.60	0.60
	225	0.90	0.30	0.30	0.40	0.60	0.30	0.80	0.80	0.80	0.30	0.60	0.60	0.60	0.30	0.60	0.60
	180	0.80	0.30	0.25	0.30	0.60	0.30	0.80	0.80	0.80	0.30	0.60	0.60	0.60	0.30	0.60	0.60
	135	0.80	0.30	0.25	0.30	0.60	0.30	0.80	0.80	0.80	0.30	0.60	0.60	0.60	0.30	0.60	0.60
	90	0.60	0.30	0.20	0.20	0.60	0.30	0.80	0.80	0.60	0.30	0.60	0.60	0.60	0.30	0.60	0.60
100-150	250	1.20	0.45	0.80	0.80	0.80	0.45	0.80	0.80	0.80	0.45	0.70	0.70	0.60	0.45	0.60	0.60
	225	1.20	0.45	0.80	0.80	0.80	0.45	0.80	0.80	0.80	0.45	0.70	0.70	0.60	0.45	0.60	0.60
	180	1.00	0.45	0.80	0.80	0.80	0.45	0.80	0.80	0.80	0.45	0.70	0.70	0.60	0.45	0.60	0.60
	135	1.00	0.45	0.80	0.60	0.80	0.45	0.80	0.80	0.60	0.45	0.70	0.70	0.60	0.45	0.60	0.60
	90	1.00	0.45	0.60	0.60	0.60	0.45	0.80	0.80	0.60	0.45	0.70	0.70	0.60	0.45	0.60	0.60

VERTICAL BENDS - DEPRESSIONS (TYPE DV)													
NORMINAL DIAMETER	TEST PRESSURE	45° BEND				22 ½ BEND				11 ½ BEND			
		L1 m	L2 m	B m	H m	L1 m	L2 m	B m	H m	L1 m	L2 m	B m	H m
40-80	250	0.40	0.16	0.30	0.50	0.40	0.16	0.30	0.50	0.40	0.16	0.20	0.50
	225	0.40	0.16	0.27	0.50	0.40	0.16	0.30	0.50	0.40	0.16	0.20	0.50
	180	0.40	0.16	0.30	0.50	0.40	0.16	0.30	0.50	0.40	0.16	0.20	0.50
	135	0.40	0.16	0.30	0.50	0.40	0.16	0.30	0.50	0.40	0.16	0.20	0.50
	90	0.40	0.16	0.30	0.50	0.40	0.16	0.30	0.50	0.40	0.16	0.20	0.50
80-100	250	0.40	0.20	0.30	0.50	0.40	0.20	0.30	0.50	0.40	0.20	0.20	0.50
	225	0.40	0.20	0.30	0.50	0.40	0.20	0.30	0.50	0.40	0.20	0.20	0.50
	180	0.40	0.20	0.30	0.50	0.40	0.20	0.30	0.50	0.40	0.20	0.20	0.50
	135	0.40	0.20	0.30	0.50	0.40	0.20	0.30	0.50	0.40	0.20	0.20	0.50
	90	0.40	0.20	0.30	0.50	0.40	0.20	0.30	0.50	0.40	0.20	0.20	0.50
100-150	250	0.80	0.30	0.40	0.55	0.70	0.30	0.30	0.55	0.50	0.30	0.30	0.55
	225	0.70	0.30	0.40	0.55	0.60	0.30	0.30	0.55	0.50	0.30	0.30	0.55
	180	0.70	0.30	0.40	0.55	0.50	0.30	0.30	0.55	0.50	0.30	0.30	0.55
	135	0.70	0.30	0.30	0.55	0.50	0.30	0.30	0.55	0.40	0.30	0.30	0.55
	90	0.80	0.30	0.30	0.55	0.40	0.30	0.30	0.55	0.40	0.30	0.30	0.55

DARFUR URBAN WATER SUPPLY PROJECT	CLIENT : UWA – Urban Water Administration SWC - STATE WATER CORPORATION	REV.1	DESCRIPTION	DATE	SIGN.	DRAWN TITLE : ANCHOR BLOCKS AT BENDS AND DEPRESSIONS				SHEET
	FUNDED BY: DFID DEPARTMENT FOR INTERNATIONAL DEVELOPMENT 	Department for International Development					DESIGNED : Dr.Haashim M.H Tumushabi K.I	DRAWN : Tumushabi K.I Harith W.S	APPROVED FOR IMPLEMENTATION :	SCALE: 1:100
Pipeline Network for Peri-Urban Area North Darfur ELFASHER	IMPLEMENTED BY: UNOPS UNITED NATIONS OFFICE FOR PROJECT SERVICES 					CHECKED : Prof.Siddig E.A	DRAFTING COORDINATION : UNOPS	CONTRACT NUMBER	DATE: DECEMBER 2018	DRAWING No: C3